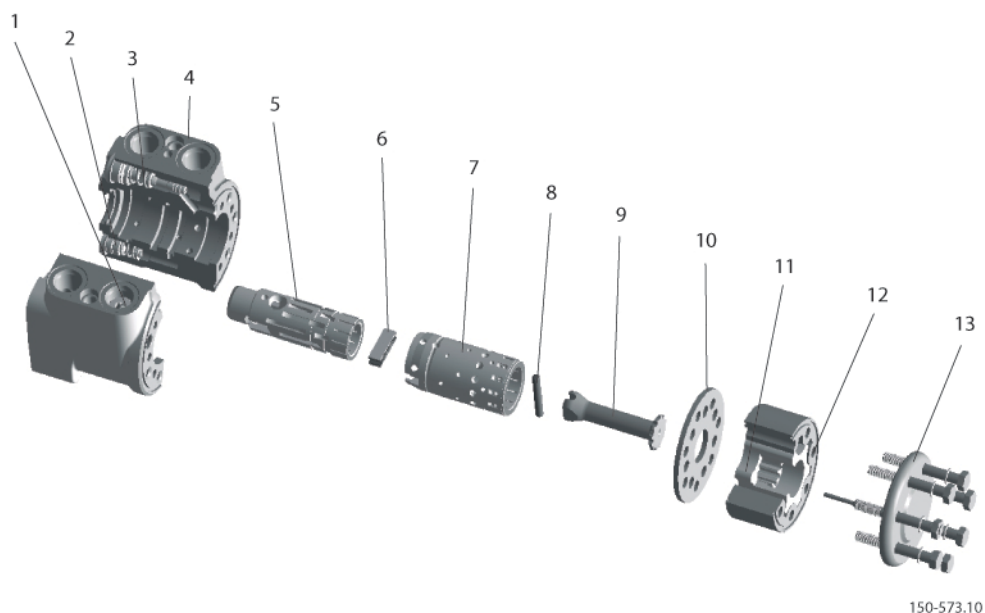


Steering components, general

Steering Units: OSPM, OSPB, OSPC, OSPR, OSPF, and OSPL

The steering unit consists of a rotary valve and a rotary meter.

Via a steering column the steering unit is connected to the steering wheel of the vehicle. When the steering wheel is turned, oil is directed from the steering system pump via the rotary valve (spool and sleeve) and rotary meter (gear wheel set) to the cylinder ports L or R, depending on the direction of turn. The rotary meter meters the oil flow to the steering cylinder in proportion to the angular rotation of the steering wheel. If the oil flow from the steering system pump is too small, the steering unit can function as a manual pump - assuming the conditions as described in [Manual steering pressure](#) on page 35.



150-573.10

- | | | | |
|---|------------------------------------|----|-------------------|
| 1 | Check valve | 8 | Cross pin |
| 2 | Shock valve | 9 | Cardan shaft |
| 3 | Relief valve | 10 | Distributor plate |
| 4 | Housing with anticavitation valves | 11 | Gear wheel |
| 5 | Spool | 12 | Gear rim |
| 6 | Neutral position spring | 13 | End cover |
| 7 | Sleeve | | |